



NORTHSTAR[®]

website builders

Screen resolutions: a pictorial guide to web browser window sizes

When designing a website, a balance has to be struck to reach the widest audience with the intended design.

The trend is consistently moving to larger monitors and screen resolutions. We monitor all our websites' visitors screen sizes and our results are compatible with the data provided by W3C Schools:

Screen resolutions January 2008

800 x 600 pixels	8%
1024 x 768 pixels	48%
1280 x 1024 pixels	38%

Pixels don't mean much to most people, so over the following pages you will see a sample website and how the design stands or falls at different resolutions.



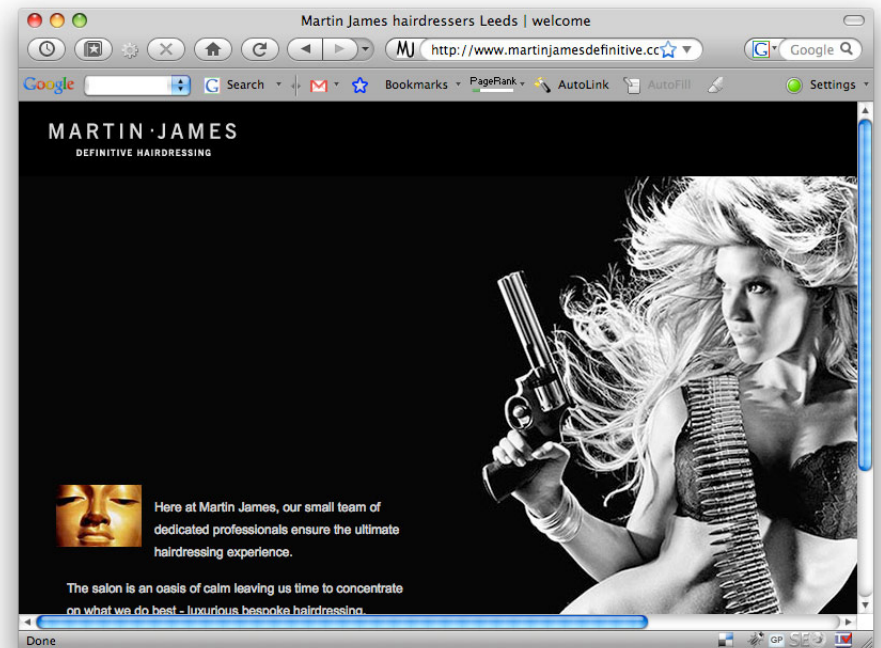
Website: www.northstar-website-design.com | Phone: 07779 300 838

800 x 600
8% of users

8% of the market and falling . . . should be non-existent in a few years.

You could design a website that accommodates this market, but the design would look pretty strange to the other 92% of users.

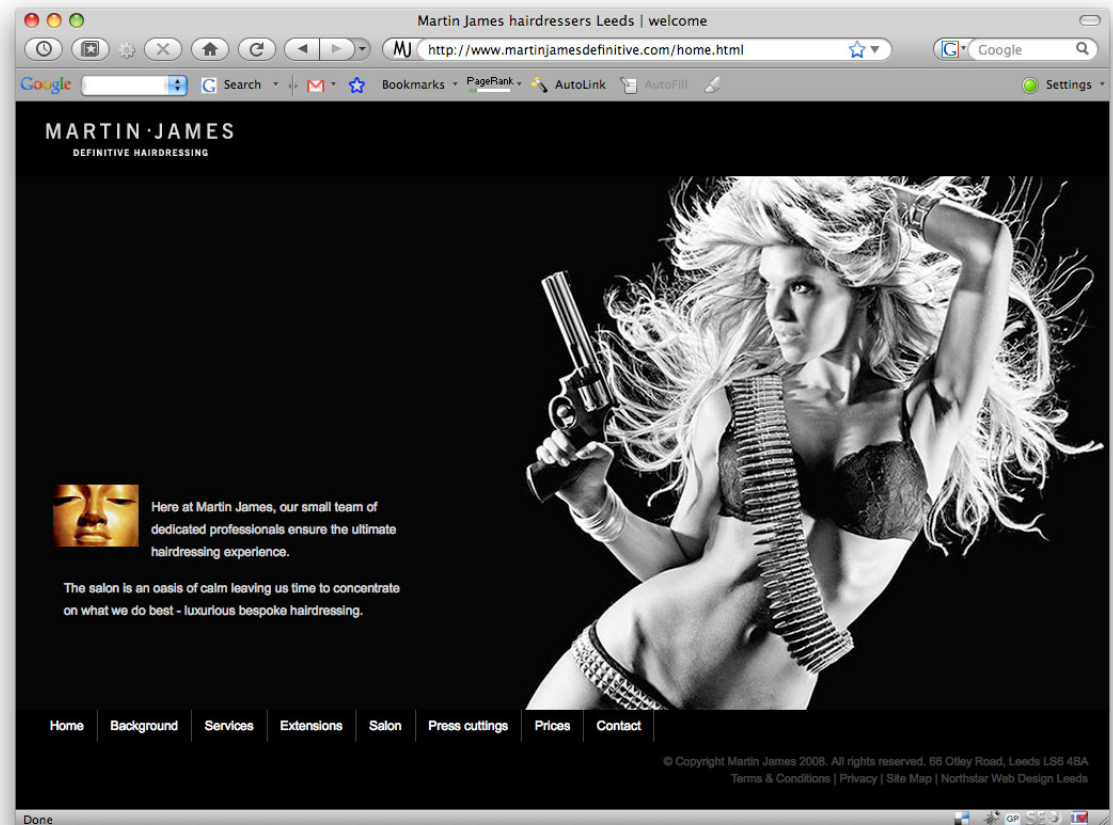
You also have to ask yourself, who would you want to reach that works on a 12 year old computer?



1024 x 768 48% of users

This screen resolution accounts for the vast majority of all internet users, but it is also falling as people switch to larger monitors.

For any web developer, their design should fit within these constraints to avoid horizontal scrolling.

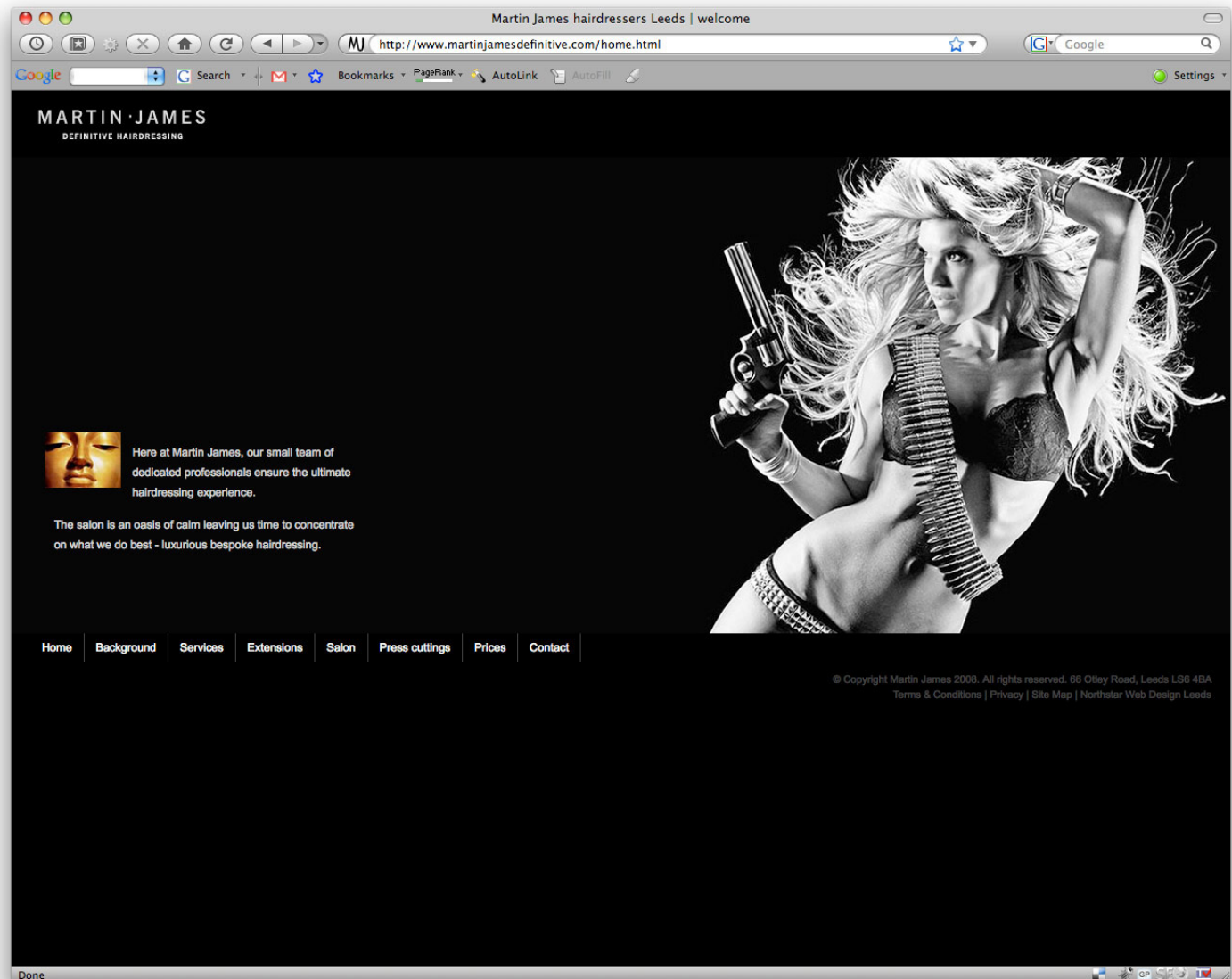


1280 x 1024
38% of users

Big time? It's estimated that 38% of users have this screen resolution - and higher.

However, you should bear in mind that modern operating systems allow for window resizing - so just because they can view a page at this size doesn't mean they will.

Most users will resize their screen so that the majority of pages on the web look thier best. Which takes us back again to 1024 x 768.



There's no accounting for personal preferences

Although we can go as far as possible to accommodate the majority, there's nothing that can be done for personal preferences.

As you can see in this example of a 1024 x 768 screen, if you load up a ton of toolbars into your browser window, it throws the content down - requiring scrolling to reach the navigation.

